

SPECIFICATIONS

GRAPHIC PANEL SIZES

Finished Graphic Panel Size

2200 (h) x 1500 (w)mm
(includes 200mm bleed)

Visual Graphic Size

2000 (h) x 1500 (w) mm
(Please note – 10mm of graphic hidden by top gripping hanger)

SYSTEM SIZES

Assembled Size

2090 (l) x 1515 (w) x 383 (d)mm

Boxed Size

1560 (l) x 115 (w) x 100 (d)mm

BOXED WEIGHTS

5.0kg

NOTE: Please test your substrate suitability before use.

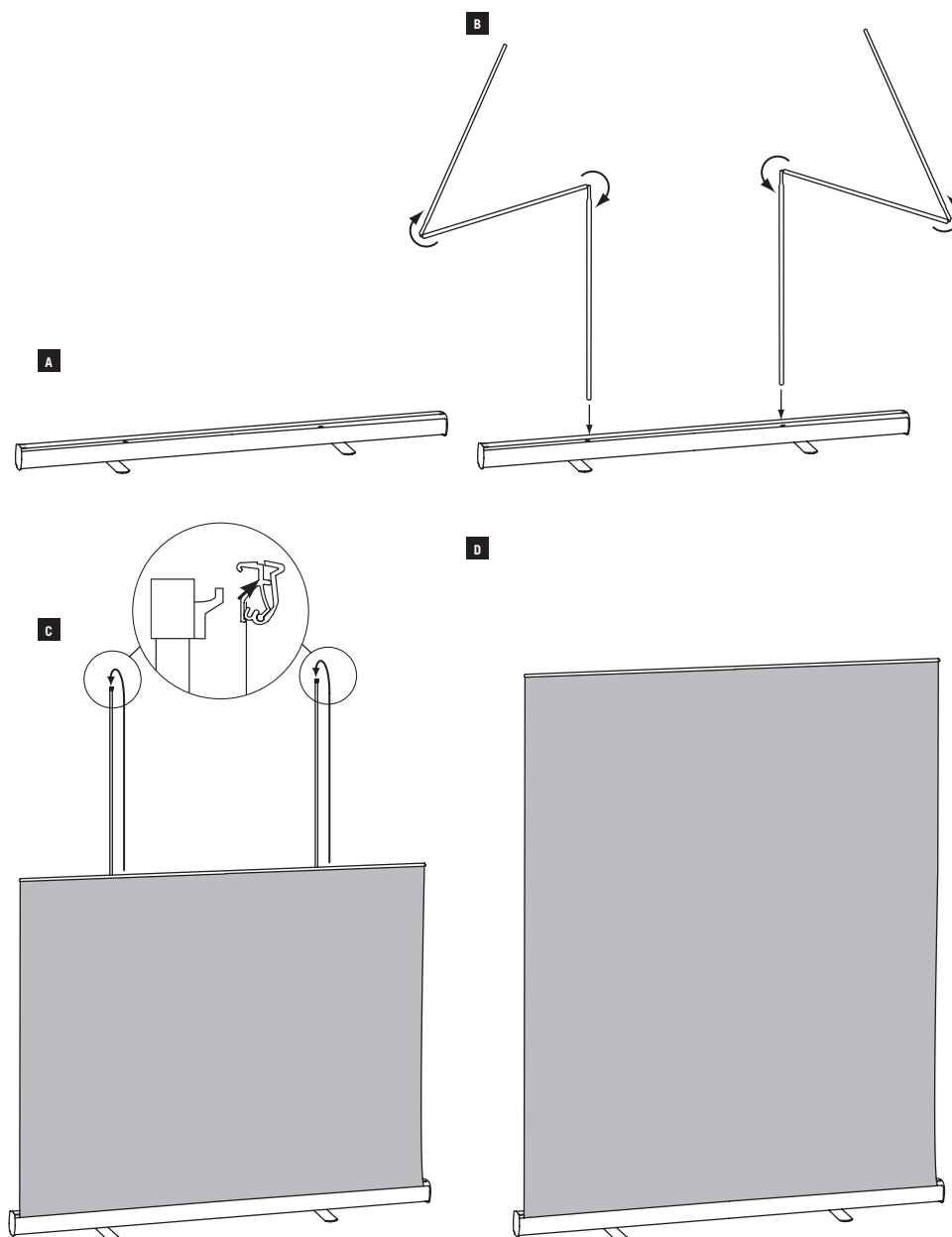
COMPONENT LIST

- 1 off Neo unit
- 2 off 3 part bungeed pole
- 1 off Gripping hanger
- 1 off Padded carry bag

plex

Issue 2 - November 2015

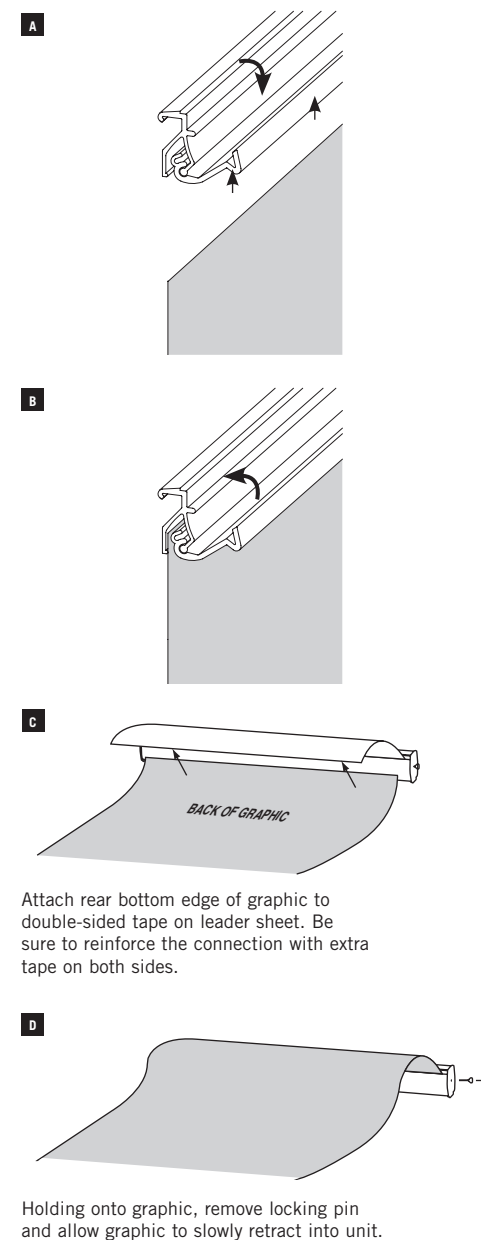
NEO 1500 – ASSEMBLY INSTRUCTIONS



IMPORTANT NOTICE:

When retracting a graphic always slowly guide it into base housing, otherwise graphic damage may occur.

NEO 1500 – GRAPHIC ATTACHMENT



IMPORTANT NOTICE:

To ensure a proper bond between graphic and double-sided tape/ hook fastener, pressure must be applied. The adhesive should be allowed to cure for 24 hours before use.